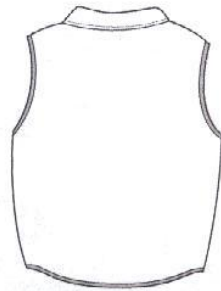


# R-Tek™ Fleece Vest

PORT AUTHORITY®



Front



Back

## JP79

- \* 13-ounce \* 100% filament polyester R-Tek™ fleece \* Twill taping inside the neck
- \* Armholes and waistband trimmed in Lycra \* Zip-close pockets

### Care Instructions:

Machine wash warm. Wash inside out with like colors. Line dry. Do not bleach. Do not iron. Do not dry clean.

### Finished Measurements in Inches

| Size                 | XS                          | S    | M            | L    | XL   | 2XL  | 3XL  | 4XL  |
|----------------------|-----------------------------|------|--------------|------|------|------|------|------|
| Length               | 25.5                        | 26.5 | 27.5         | 28.5 | 29.5 | 30.5 | 31.5 | 32.5 |
| Chest                | 19                          | 20.5 | 22           | 23.5 | 25   | 26.5 | 28   | 29.5 |
| Pocket HT            | 7                           | 7    | 7            | 7    | 7.5  | 7.5  | 7.5  | 7.5  |
| Collar Hight         | 2.75                        | 2.75 | 2.75         | 2.75 | 2.75 | 2.75 | 2.75 | 2.75 |
| Areas for Decoration | Left/Right Chest, Full Back |      | Port Pocket™ |      |      | NA   |      |      |

Chest width measured 1" below arm hole. Body length measured from back neck seam to hem.

### Colors

|   |                  |
|---|------------------|
|  | Black            |
|  | Dark Green       |
|  | Gray Heather     |
|  | Midnight Heather |
|  | Navy             |
|  | Red              |
|  | Royal            |

### Please Note:

Colors shown are approximate and for reference only. For closest match see PMS colors, or for exact match, returnable samples and grommited samples are available.

### Color Chart

| Colors      | Black         | Dark Green | Gray Heather | Midnight Heather | Navy      | Red       | Royal     |
|-------------|---------------|------------|--------------|------------------|-----------|-----------|-----------|
| Textile PMS | 19-4006TC     | 19-5320TC  | No Match     | No Match         | 19-3920TC | 19-1656TC | 19-3952TC |
| General PMS | Process Black | 5467C      | No Match     | No Match         | 533C      | 202C      | 661C      |